

## ACCESSIBILITY MAP

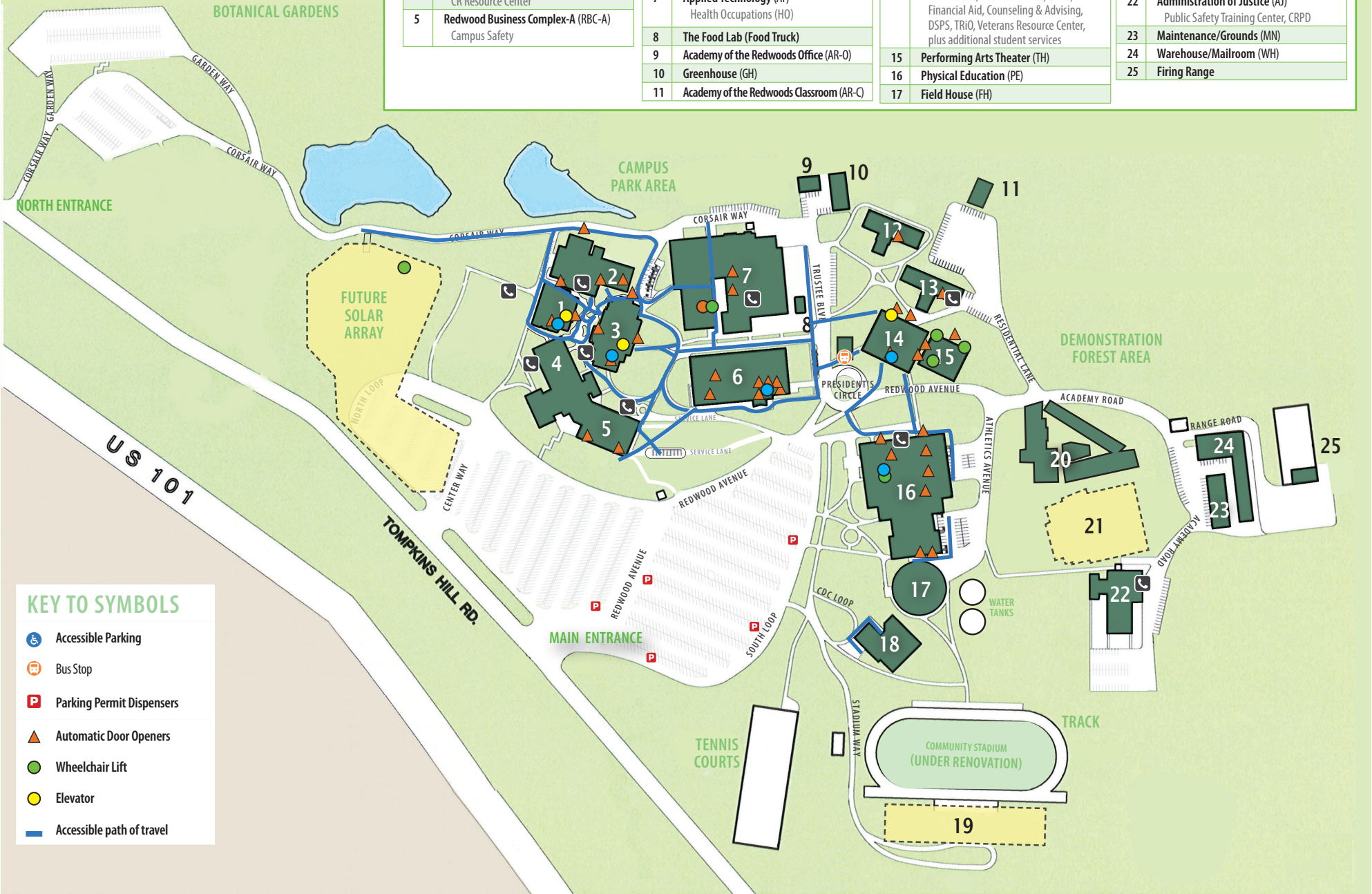
### BUILDING LEGEND

|   |  |
|---|--|
| 1 | Science (SC)   |
| 2 | CR Café  |
| 3 | Humanities (HU)  |
| 4 | Redwood Business Complex-B (RBC-B)<br>CR Resource Center |
| 5 | Redwood Business Complex-A (RBC-A)<br>Campus Safety      |

|    |  |
|----|--|
| 6  | Learning Resource Center (LRC)<br>Library, Academic Support Center (ASC)<br>Bookstore, EOPS/CARE, Writing Center,<br>Math Lab, Multicultural & Equity Center |
| 7  | Applied Technology (AT)<br>Health Occupations (HO)   |
| 8  | The Food Lab (Food Truck)  |
| 9  | Academy of the Redwoods Office (AR-O)  |
| 10 | Greenhouse (GH)  |
| 11 | Academy of the Redwoods Classroom (AR-C)   |

|    |   |
|----|---|
| 12 | Del Norte Residence Hall (DH)   |
| 13 | Mendocino Residence Hall (MH)<br>ASCR Office, Basic Needs Center  |
| 14 | Student Services/Administration (SS/AD)<br>Admissions, Business Office, CRPD,<br>Financial Aid, Counseling & Advising,<br>DSPS, TRiO, Veterans Resource Center,<br>plus additional student services |
| 15 | Performing Arts Theater (TH)  |
| 16 | Physical Education (PE)   |
| 17 | Field House (FH)  |

|    |   |
|----|---|
| 18 | Child Development Center (CDC)  |
| 19 | Future Field House  |
| 20 | Creative Arts (CA)  |
| 21 | Future Physical Education   |
| 22 | Administration of Justice (AJ)<br>Public Safety Training Center, CRPD |
| 23 | Maintenance/Grounds (MN)  |
| 24 | Warehouse/Mailroom (WH)   |
| 25 | Firing Range  |



### KEY TO SYMBOLS

- Accessible Parking
- Bus Stop
- Parking Permit Dispensers
- Automatic Door Openers
- Wheelchair Lift
- Elevator
- Accessible path of travel