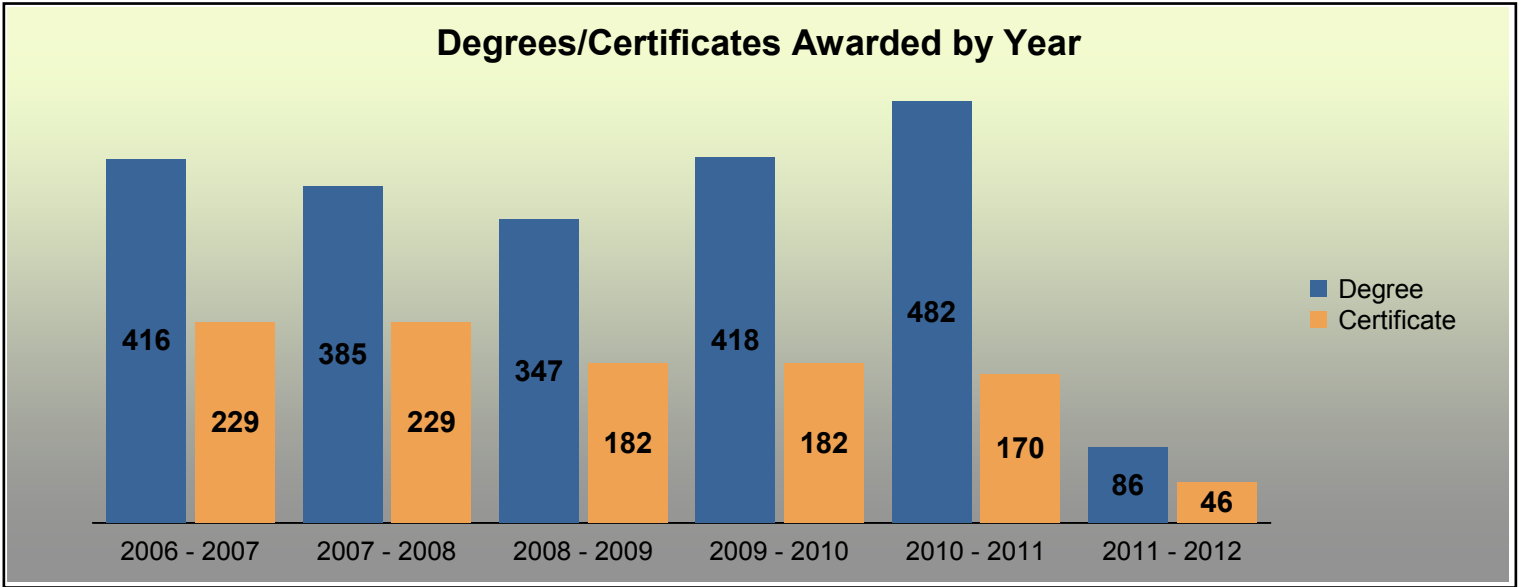




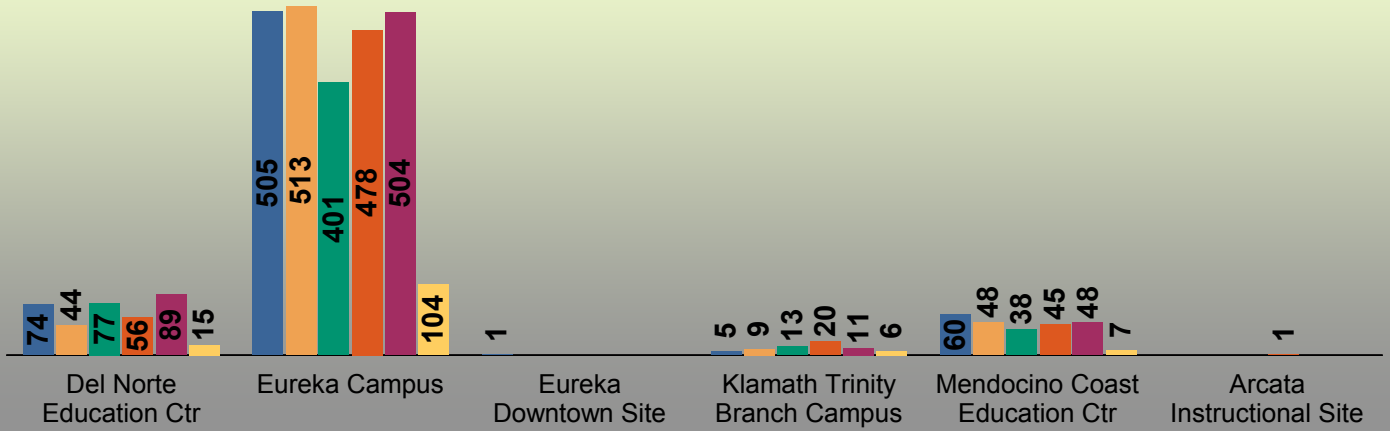
Degree/Certificate Completions by Academic Year

This report tallies each degree and certificate awarded. If an individual earned an Associate Degree and 2 Certificates, 3 awards would be tallied.



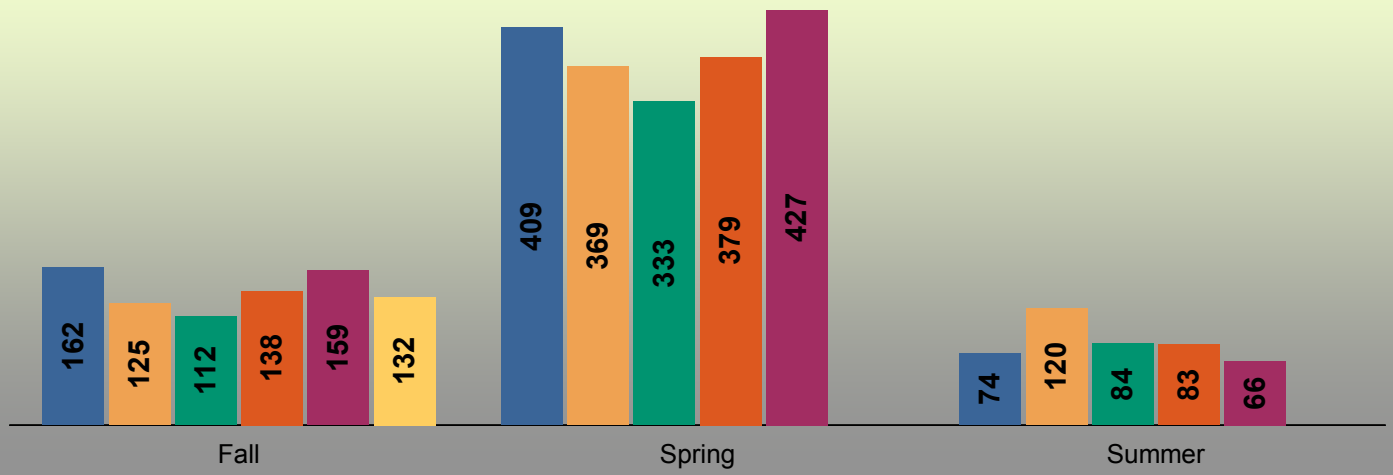
		2006 - 2007	2007 - 2008	2008 - 2009	2009 - 2010	2010 - 2011	2011 - 2012
Degree	AA Liberal Arts:			34	167	269	65
	Associate of Arts	236	175	142	101	42	4
	Associate of Science	180	210	171	150	171	17
	Total	416	385	347	418	482	86
Certificate	Certificate - 18 to 29 Units	10	11	9	12	5	4
	Certificate - 30 to 59 Units	163	159	159	157	157	42
	Certificate - 6 to 17 Units	52	54	8	7	2	
	Certificate - Over 60 Units	4	5	6	6	6	
	Total	229	229	182	182	170	46
Total	645	614	529	600	652	132	

Degrees/Certificates Awarded by Location



		2006 - 2007	2007 - 2008	2008 - 2009	2009 - 2010	2010 - 2011	2011 - 2012
Arcata Instructional Site	Degree					1	
	Total					1	
Del Norte Education Ctr	Degree	41	43	49	52	71	10
	Certificate	33	1	28	4	18	5
	Total	74	44	77	56	89	15
Eureka Campus	Degree	338	315	276	334	383	66
	Certificate	167	198	125	144	121	38
	Total	505	513	401	478	504	104
Eureka Downtown Site	Degree	1					
	Total	1					
Klamath Trinity Branch Campus	Degree	4	8	10	9	7	5
	Certificate	1	1	3	11	4	1
	Total	5	9	13	20	11	6
Mendocino Coast Education Ctr	Degree	32	19	12	22	21	5
	Certificate	28	29	26	23	27	2
	Total	60	48	38	45	48	7
Total		645	614	529	600	652	132

Degrees/Certificates Awarded by Term



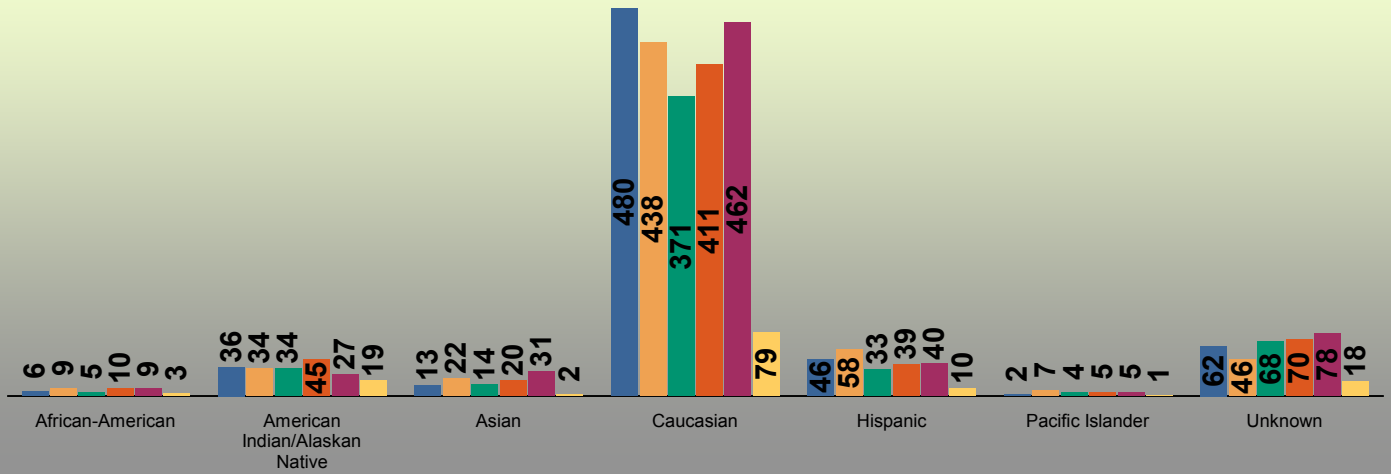
		2006 - 2007	2007 - 2008	2008 - 2009	2009 - 2010	2010 - 2011	2011 - 2012
Fall	Degree	81	79	61	95	114	86
	Certificate	81	46	51	43	45	46
	Total	162	125	112	138	159	132
Spring	Degree	279	245	242	269	335	
	Certificate	130	124	91	110	92	
	Total	409	369	333	379	427	
Summer	Degree	56	61	44	54	33	
	Certificate	18	59	40	29	33	
	Total	74	120	84	83	66	
Total		645	614	529	600	652	132

Total Awards by Gender



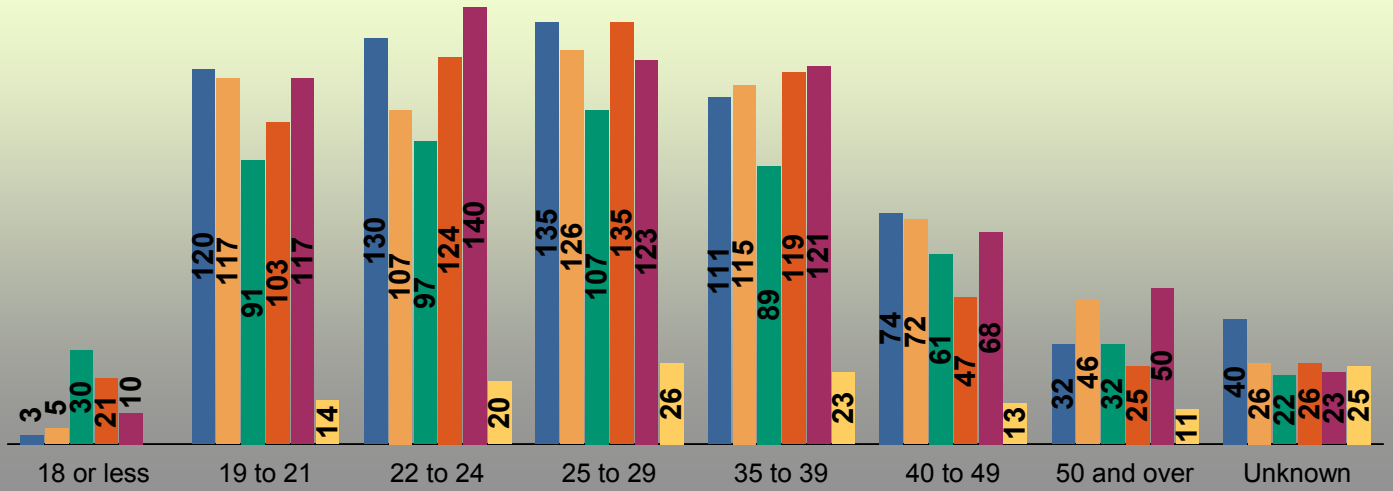
		2006 - 2007	2007 - 2008	2008 - 2009	2009 - 2010	2010 - 2011	2011 - 2012
Female	Degree	266	238	214	266	284	46
	Certificate	111	132	102	97	99	21
	Total	377	370	316	363	383	67
Male	Degree	149	145	130	146	193	38
	Certificate	116	96	78	83	68	25
	Total	265	241	208	229	261	63
Unknown	Degree	1	2	3	6	5	2
	Certificate	2	1	2	2	3	
	Total	3	3	5	8	8	2
Total		645	614	529	600	652	132

Total Awards by Ethnicity



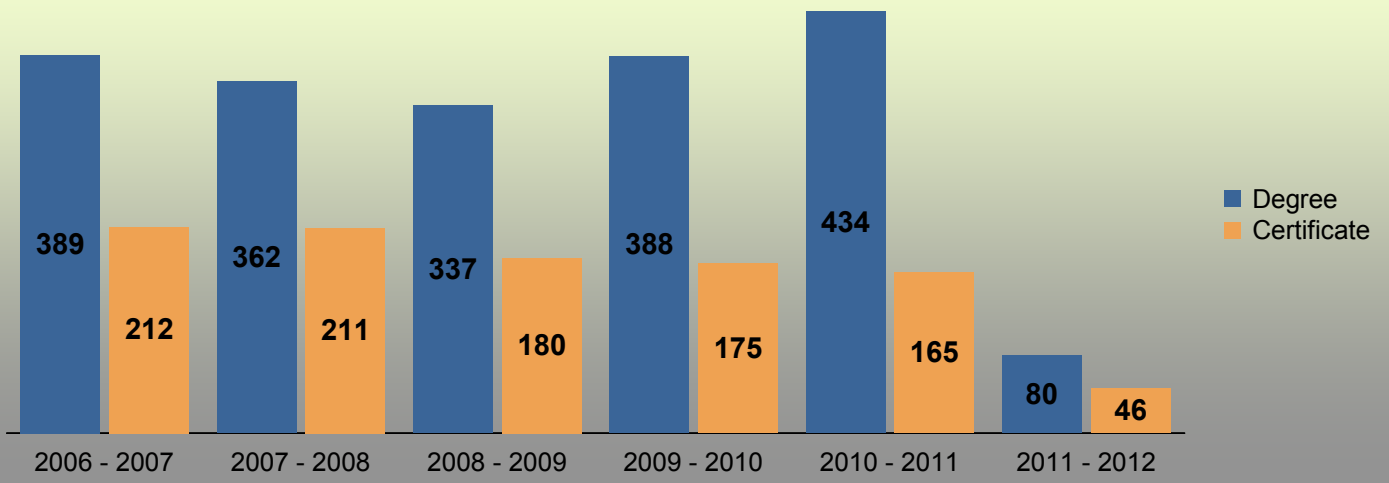
		2006 - 2007	2007 - 2008	2008 - 2009	2009 - 2010	2010 - 2011	2011 - 2012
African-American	Degree	2	5	3	8	4	2
	Certificate	4	4	2	2	5	1
	Total	6	9	5	10	9	3
American Indian/Alaskan Native	Degree	27	20	21	24	16	14
	Certificate	9	14	13	21	11	5
	Total	36	34	34	45	27	19
Asian	Degree	8	13	8	13	22	2
	Certificate	5	9	6	7	9	
	Total	13	22	14	20	31	2
Caucasian	Degree	309	279	247	295	347	47
	Certificate	171	159	124	116	115	32
	Total	480	438	371	411	462	79
Hispanic	Degree	24	35	22	26	24	6
	Certificate	22	23	11	13	16	4
	Total	46	58	33	39	40	10
Pacific Islander	Degree	1	2	3	2	4	
	Certificate	1	5	1	3	1	1
	Total	2	7	4	5	5	1
Unknown	Degree	45	31	43	50	65	15
	Certificate	17	15	25	20	13	3
	Total	62	46	68	70	78	18
Total		645	614	529	600	652	132

Total Awards by Age Range



		2006 - 2007	2007 - 2008	2008 - 2009	2009 - 2010	2010 - 2011	2011 - 2012
18 or less	Degree	3	3	29	18	10	
	Certificate		2	1	3		
	Total	3	5	30	21	10	0
19 to 21	Degree	93	78	63	81	95	10
	Certificate	27	39	28	22	22	4
	Total	120	117	91	103	117	14
22 to 24	Degree	86	74	71	87	112	14
	Certificate	44	33	26	37	28	6
	Total	130	107	97	124	140	20
25 to 29	Degree	87	69	69	90	94	17
	Certificate	48	57	38	45	29	9
	Total	135	126	107	135	123	26
35 to 39	Degree	70	70	49	76	76	16
	Certificate	41	45	40	43	45	7
	Total	111	115	89	119	121	23
40 to 49	Degree	41	41	33	32	47	6
	Certificate	33	31	28	15	21	7
	Total	74	72	61	47	68	13
50 and over	Degree	12	27	15	14	29	4
	Certificate	20	19	17	11	21	7
	Total	32	46	32	25	50	11
Unknown	Degree	24	23	18	20	19	19
	Certificate	16	3	4	6	4	6
	Total	40	26	22	26	23	25
Total		645	614	529	600	652	132

Distinct Students Receiving Degrees/Certificates by Year



	2006 - 2007	2007 - 2008	2008 - 2009	2009 - 2010	2010 - 2011	2011 - 2012
Degree	389	362	337	388	434	80
Certificate	212	211	180	175	165	46
Total	570	543	498	541	576	123