

RESOLUTION NO. 785

**RESOLUTION OF THE GOVERNING BOARD OF TRUSTEES
OF THE REDWOOD COMMUNITY COLLEGE DISTRICT
APPROVING ADJUSTED TRUSTEE AREA BOUNDARIES**

WHEREAS, The Redwood Community College District (“District”) currently uses a by-trustee area election process to elect its governing board members; and

WHEREAS, Education Code section 5019.5 requires districts that elect by-trustee area to adjust the trustee area boundaries following each decennial federal census using population figures validated by the Population Research Unit of the Department of Finance; and

WHEREAS, the adjustments shall ensure that the population of each trustee area is proportional pursuant to Education Code section 5019.5(a)(1) or (2); and

WHEREAS, District has retained the services of Planwest Partners Inc. to prepare draft adjusted trustee area boundary plans for the District’s consideration (the “Plans”) that the Board has considered; and

WHEREAS, the Board conducted a public hearing on February 1st, 2022 to receive public input and comment on the Plans; and

WHEREAS, the Board has considered all such public input and comment on the Plans; and

WHEREAS, the Board desires to adopt Plan 3, a copy of which is attached to this Resolution as Exhibit A.

NOW THEREFORE BE IT RESOLVED, by the Governing Board of Trustees of the Redwood Community College District as follows:

1. That the above recitals are true and correct.
2. That the Board hereby adopts Plan 3.
3. That the President and/or his/her designee take all actions necessary to implement the adjusted boundaries for the next regularly-scheduled governing board member election occurring in November of 2022.

Passed and Adopted this 1st day of February, 2022 by a vote of 6 in Favor, 0 Opposed, 0 Abstaining, and 1 Absent.

Dated: February 1, 2022



Mrs. Carol Mathews, President of the Board

www.redwoods.edu

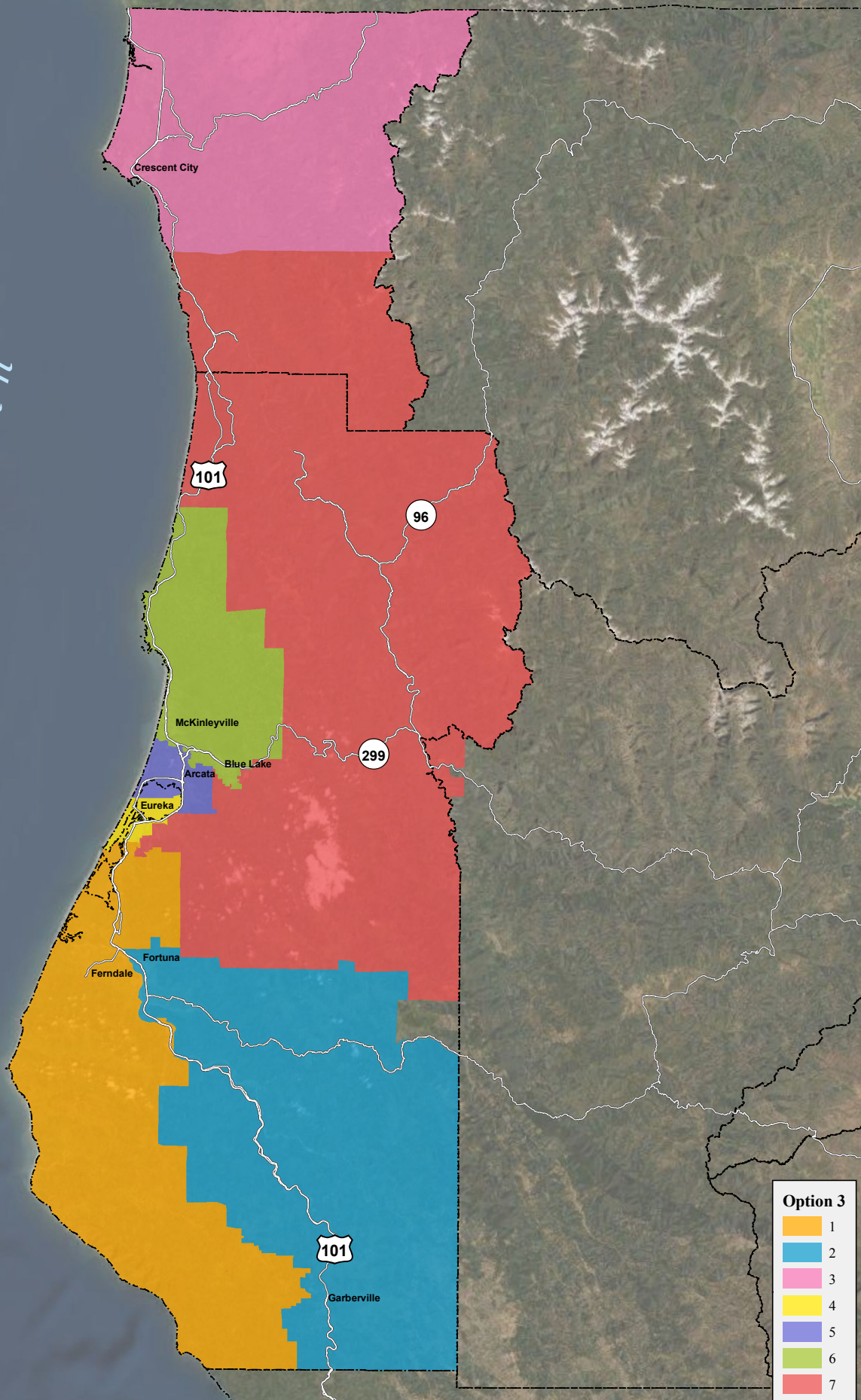
Attested by:



Dr. Rebecca Robertson, Clerk of the Board



Pacific Ocean



0 10 20 Miles

Option 3

- 1
- 2
- 3
- 4
- 5
- 6
- 7

Redwoods Community College District Proposed Trustee Areas: Option 3

PLANWEST
PARTNERS, INC.

Map Date
1/20/2022

Sources: Boundaries, Roads, Parcels: Humboldt County GIS, U.S. Census