



COMM-1-V2646 Public Speaking

Course

Semester & Year: Spring 2022

Course ID & Section #: COMM-1V-V2646 Public Speaking

Instructor's name: Oli Mohammadi

[if synchronous] Day/Time of required meetings:

Live on Zoom (randomly assigned)

- Feb 1 at (9:00am-11:15am)—OR—Feb 3 at (5:45pm-7:00pm)
- Mar 8 or Mar 10 at (9:00am-11:15am)—OR—Mar 8 or Mar 10 at (5:45pm-7:00pm)
- Apr 12 (9:00am-11:15am)—OR—Apr 12 or 14 (5:45pm-7:00pm)

[if needed] Number of proctored exams: n/a

Course units: 3

Contact

Office location or *Online: Online

Office hours: T/Thr by appointment

Phone number: (504) 484-9213

Email address: oli-mohamamdi@redwoods.edu

Preferred Method

Canvas Inbox is the preferred method of communication. Most of your questions are about course policies, assignments, or grades. Canvas Inbox quickly toggles between your message and critical points of reference in the class.

What is Canvas Inbox?

Canvas Inbox is a messaging tool used to communicate with your instructors, classmates in your courses, and your assigned groups.

Need help with Canvas Inbox?

Great news! [There is an easy access guide.](#)

Check and response rate

I check written messages frequently on the weekdays, typically twice, and respond within 24-business-hours. If you do not hear from me within 24-business-hours, please feel free to resend the message.

Google Voice

The phone number listed is a digital Google Voice mailbox. I listen to voice messages and respond in writing. Please spell your last name and indicate the course, section, and assignment name if you leave a message. This speeds up response times.

Catalog description

An introduction to the fundamental theories and techniques of public speaking stressing audience analysis, logical organization, and ideas support. Students will analyze and research issues and construct and deliver informative and persuasive speeches on topics of current concern. Honors work challenges students to be more analytical and creative through expanded assignments such as more in-depth engagement with and application of techniques of argumentation and persuasion.

Learning Outcomes

- Based upon accepted theoretical models of human communication, analyze the communication situation, audience, occasion, and subject matter in order to construct and deliver effective speeches, using classical and contemporary rhetorical techniques to inform and/or persuade an audience.
- Exercise ethical considerations in the development, support, and presentation of ideas to diverse
- Critically analyze informative and persuasive communication, including classroom speeches, their own
- Conduct relevant research, analyzing and evaluating electronic and print sources and other research materials for authority, credibility, relevance, and bias to support speeches credibly.

Course objectives

1. Explain the basic principles of human communication.
2. Research and evaluate electronic and print source material.
3. Analyze the communication situation, audience, occasion, purpose, and selection of topic.
4. Demonstrate that they are careful and critical thinkers and communicators, both as speakers and as listeners.
5. Explain their relationship and ethical responsibilities to others involved in the communication transaction.
6. Conduct in-depth research of theoretical concepts and make interdisciplinary connections.

Textbook

Your textbook is free—your link to the file in each learning unit.

General information

Purpose

This course introduces speech communication, which emphasizes the practical skill of public speaking, including techniques to lessen speaker anxiety and visual aids to enhance speaker presentations. Civility and ethical speech-making are the foundations of this course. Its goal is to prepare you for success in typical public speaking situations and provide them with the basic principles of organization and research needed for effective speeches.

Catalog description

An introduction to the fundamental theories and techniques of public speaking stressing audience analysis, logical organization, and ideas support. Students will analyze and research issues and construct and deliver informative and persuasive speeches on topics of current concern. Honors work challenges students to be more analytical and creative through expanded assignments such as more in-depth engagement with and application of techniques of argumentation and persuasion.

Transferability

The course meets IGETC Area 1—C (Oral Communication) and CSU Area A—1 (Oral Communication) transfer requirements.

Teaching modality

This section meets on Canvas and Zoom. There are three required Zoom meetings. During these meetings, you present speeches. You are assigned to a random group and time slot.

Am I ready for an online class?

1. Take the [Penn State Student Self-Assessment for Online Learning Readiness](#).
2. Engage "[Getting Tech Savvy](#)."

Required technologies

Internet

You need to have constant access to the internet for the duration of the course. The college campus has free wifi. You can also consider purchasing a personal wifi hotspot to use if you do not have reliable wifi at home or reliable transportation to campus. Check out the [California Community College Connects](#) for affordable student rates.

Desktop or laptop, tablet or smartphone

The course takes place on Canvas, which is a digital learning management system. To engage Canvas, you need a desktop or laptop, tablet, or smartphone.

Preferred devices

A desktop or laptop is the optimal device to use for the course. While you can complete some assignments and group work using a smartphone or tablet, I recommend not entirely achieving this class on a tablet or smartphone. While convenient, the devices are not the most streamlined.

Alternative devices

You can access the course on a smartphone or tablet using the Canvas app. If you have a smartphone or a tablet, there is a free Canvas app through the [Apple store](#) or [Google Play](#).

Digital camera or webcam

You will need a digital camera that can take video. A smartphone camera or tablet camera works great. Just make sure you have the Canvas app.

Uploading and downloading media

You need to have the ability to get the images or videos off your smartphone, portal camera, computer drive onto Canvas.

Softwares

Besides Canvas, you need other up-to-date software for the duration of this course. The additional software is available free for download—

- [Adobe Acrobat](#)
- [Chrome](#)



Overview of assignments

Speeches—125pts

Each speech requires feedback from classmates. Speeches submitted late may receive no feedback, so please try to be ontime.

- 10 pts—Introducing me
- 25 pts—Autobiography
- 25 pts—We Must Change Now
- 25 pts—Informative Speech
- 25 pts—Monroe's Motivated Sequence

Lab partner virtual meetings—48pts (12 pts each)

1. No virtual meeting required—Introducing yourself—You post an introduction to your lab partners and post your availability to meet. You use a web conferencing app of your choice (e.g., Zoom, Google Meets, FaceTime, Skype, WhatsApp) to hold meetings with your lab partners and submit responses. You are not penalized if partners do not post on time.
2. Virtual meeting required—Active listening—The topic is emotions. You and your lab partners meet using any visual electronic means that allows you to see and hear one another (e.g., Zoom, Google meets, WhatsApp, etc.). You do not need to record the meeting. Discuss the three questions, then submit a

co-written reflection. Only those who participated in the meeting earn points. You are not penalized if partners do not show up for the meeting.

3. Virtual meeting required—Private agenda—Same as above, just a different topic. You and your partners discuss active listening.
4. Virtual meeting required—Informative v. persuasive— Same as above, just a different topic. You and your partners discuss the stages of relationships.

Check stops—30 pts (15pts each)

You have two check stops. Each combines questions from multiple chapter readings. You have unlimited attempts and unlimited time. The questions are T/F. You can use your book and notes.

Short paper—25 points

You have a short paper that views a speech and looks at logos, pathos, ethos.

Optional bonus—18pts (2pts each)

Most modules will contain an optional bonus self-assessment. There is no penalty for not taking the self-assessment. There is, however, a reward! You can earn a total of +2 bonus points per self-assessment.

Grading process

Timing

I generally grade assignments within 48—72 business hrs after the due date. Notes are left in the gradebook, and each task has a grading rubric used for grading.

Instructions and rubrics

The instructions for the assignments and grading rubric can be found directly in Canvas under the corresponding module.

Late submissions

Late work is accepted. The penalty is 10% per day. Late assignments may not receive comprehensive feedback. The grading rubric will be used, however. The rubric will provide general notes.

Due dates

The exact due dates can be found at the bottom of the syllabus. There is also information on the [Canvas Calendar](#) and again in Canvas under the corresponding module.

College grading scale

You can read more about the College Grading Scale and associated policies in the student handbook.

93—100 A 90—92 A-

87—89 B+ 83—86 B 80—82 B -

77—79 C+ 73—76 C 70—72 C -

67—69 D+ 63—66 D 60—62 D -

59 and below F

P—Pass—C or better. Units awarded not counted in GPA

NP—No Pass—Less than satisfactory or failing. Units not counted in GPA.

S—Satisfactory—(Noncredit)

I—Incomplete— if not completed, the final grade will be an "F."

W—Withdrawal

Course values

A = Exceptionally well prepared and executed the completion of assigned work indicating effort, individualized style, and demonstrating a thorough grasp of large portions of the course material.

B = Creative, well-prepared work, demonstrating great effort, talent, or grasp of the material distinctly superior to an "average" or "C" effort.

C = Satisfactory completion of assigned work at a level of effort and competency customarily expected of most students (basic completion, average performance, and reasonable effort).

D = Unsatisfactory completion of work indicating misperceived objectives or failure to grasp key concepts with reasonable effort.

F = Failure to complete assignments through a lack of reasonable effort or failure to attain a passing average on exams or assignments.

Due date and late work policies

Late work is accepted. The penalty is 10% per day.

Once course ends

No work is accepted after the final day of class. If an assignment has not been submitted by the last day of the course, the opportunity to submit has been forfeited.

Assignments with multiple parts

Many tasks have two or more components (e.g., your submission + feedback for classmates). Late penalties or rubric deductions can be applied if both parts are not submitted on the due date.

Exceptions

There are very few and minimal exceptions to the 10% per day. A real emergency is a crisis (e.g., hurricane) or mandatory obligations such as military orders, documented death of a parent/child/spouse, in-patient hospitalization, the birthing of a child, incarceration, or news reported internet outage your entire county of residence (i.e., home coverage going out does not count).

Any exception is 100% at the instructor's discretion and can not be applied to feedback for classmates or group/partner activity. Documentation that can be verified must be provided along with the request for an exception.

Advice on solving late work issues

To curtail issues, I highly suggest always having access to a computer, backup computer, or phone containing the Canvas app + the internet or some LTE or 4G network coverage (smartphones all have this). Remember that there are resources on campus. Some public libraries, too. WiFi is available at nearly every coffee shop, Target, McDonald's, etc.

Participation, dropping, and being withdrawn.

Policy

Regular and punctual attendance is an integral part of the learning process. An instructor has the authority to drop a student who violates written participation policies. Instructors are not obligated to hold seats for enrolled students but do not attend the first class meeting.

Instructor drop

After prior notification, you may be dropped for demonstrating insufficient preparation/prerequisites. You may also be dropped for persistently neglecting assignments or showing inadequate progress.

Defining inadequate

Inadequate progress means missing four assignments or missing or being late on any assignment during modules 1.0-3.0.

Student drop

Student-initiated withdrawal may occur through the second week of class with nothing recorded on the student transcripts and weeks 2—10 with a recorded W (withdrawal).

Know your dates

You can and should access the academic calendar and view critical college-wide dates. These dates tell you about drops, holidays, and timeframes for petitions/forms, among other things.



In the academic community, the high value placed on truth implies a corresponding intolerance of academic dishonesty. In cases involving academic dishonesty, determination of the grade and the student's status in the course is left primarily to the faculty member's discretion. In such cases, where the instructor determines that a student has demonstrated academic dishonesty, the student may receive a failing grade for the assignment and/or exam and be reported to the Chief Student Services Officer or designee. The Student Code of Conduct ([AP 5500](#)) is available on the College of the Redwoods website. Additional information about the rights and responsibilities of students, Board policies, and administrative procedures is located in the [College Catalog](#) and on the [College of the Redwoods website](#).

What is plagiarism?

Plagiarism is using other's ideas and words without clearly acknowledging the source of that information. With a little guidance and effort, plagiarism is easy to avoid. Part of being a college student is evaluating other people's ideas and incorporating them to form your own opinion. You are also here to gain factual knowledge and integrate it into our broader understanding of the world. However, you must give credit to their source as you present ideas and facts. Avoiding plagiarizing and citing all your sources is the best practice in college! Having well-chosen and well-cited sources can help you to earn higher grades.

How can I understand plagiarism?

To better understand plagiarism—

1. First, [take this practice test](#). Don't worry! It is not graded, and no one will see the results but you!
2. Then, take a minute to [watch the video on plagiarism](#).

How can I avoid plagiarism?

To avoid plagiarism, you must give credit whenever you use—

- Another person's idea, opinion, or theory;
- Any facts, statistics, graphs, drawings -- any pieces of information -- that are not common knowledge (see below);
- Quotations of another person's actual spoken or written words;
- Paraphrase of another person's spoken or written words

What are some strategies for avoiding plagiarism?

Put in quotations everything that comes directly from a book or the web, then cite the source.

- A rule of thumb is that no quotation should be more than two lines in length. If it is longer than that, you need to paraphrase.
- Paraphrase, but make sure that you don't just rearrange a few words. One good strategy to paraphrase something is to read the passage, close the book or the web browser, and summarize what the author said.

What is common knowledge?

Common knowledge is facts that can be found in numerous places and are likely to be known by many people.

Example 1

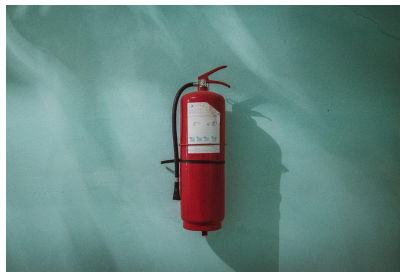
- Ozone in the ozonosphere absorbs harmful ultraviolet light.
- This is generally known information. You do not need to document this fact.
- You do need to document facts that are generally not known, ideas that interpret facts.

Example 2

- Some types of CFCs have a worse effect on the ozone layer than others. According to an NOAA report, a molecule of the compound used in fire extinguishers is ten times more effective in destroying ozone than a molecule of the compound used in refrigeration and the manufacture of foam products (Thiele and Podda, 1985).
- The idea above is an interpretation based on facts presented in an NOAA report. Even if the author stated that 'Some types of CFCs have a worse effect on the ozone layer than others,' that fact should be backed up with a citation.

What can happen if you plagiarize?

You will receive an F on the assignment or the exam for the first infraction. On subsequent offenses, you will receive an F for the course. Alongside the F grade(s), you will also be reported to the dean of students. The dean of students will call you into their office, and they can revoke your academic privileges (meaning that you will not be able to attend the college for some time).



Emergency procedures/RAVE

College of the Redwoods has implemented an emergency alert system. In the event of an emergency on campus, you can receive an alert through your email and/or phones at your home, office, and cell.

Registration is necessary to receive emergency alerts.

Please go to <https://www.GetRave.com/login/Redwoods> and use the “Register” button on the top right portion of the registration page to create an account. You can elect to add additional information during the registration process, such as office phone, home phone, cell phone, and personal email.

Please use your CR email address as your primary Registration Email. Your CR email address ends with “redwoods.edu.” Please contact Public Safety at 707-476-4112 or security@redwoods.edu if you have any questions.

Del Norte Campus Emergency Procedures

For more information, see the [Redwoods Public Safety Page](#). In an emergency that requires an evacuation of the building:

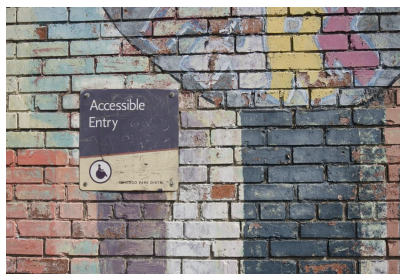
- Be aware of all marked exits from your area and building.
- Once outside, move to the nearest evacuation point outside your building:
- Keep streets and walkways clear for emergency vehicles and personnel.
- Do not leave campus unless it has been deemed safe by the campus authorities.

Klamath Trinity Campus Emergency Procedures

For more information on Public Safety, go to the [Redwoods Public Safety Page](#). It is the responsibility of the College of the Redwoods to protect life and property from the effects of emergencies within its jurisdiction.

In the event of an emergency:

1. Evaluate the impact of the emergency on your activity/operation and take appropriate action.
2. Dial 911 to notify local agency support such as law enforcement or fire services.
3. Follow established procedures for the specific emergency as outlined in the College of the Redwoods Emergency Procedure Booklet.
4. If safe to do so, notify key Klamath-Trinity Instructional Site administrators and personnel.
5. Do not leave the site unless necessary to preserve life and/or have been deemed safe by the person in command.
6. If safe, move to the nearest evacuation point outside the building (Pooky’s Park), directly behind the Hoopa Tribal Education Building.



Accessibility

Students will access online course materials that comply with the Americans with Disabilities Act of 1990 (ADA), Section 508 of the Rehabilitation Act of 1973, and the College of the Redwoods policies. Students who discover access issues with this class should contact the instructor.

College of the Redwoods is also committed to making reasonable accommodations for qualified students with disabilities. If you have a disability or believe you might benefit from disability-related services and accommodations, please contact your instructor or [Disability Services and Programs for Students \(DSPS\)](#). Students may make requests for alternative media by contacting DSPS based on their campus location:

- Eureka: 707-476-4280, student services building, 1st floor
- Del Norte: 707-465-2324, main building near the library
- Klamath-Trinity: 530-625-4821 Ext 103

During COVID19, approved accommodations for distance education classes will be emailed to the instructor by DSPS. In the case of face-to-face instruction, please present your written accommodation request to your instructor at least one week before the first test so that necessary arrangements can be made. Last-minute arrangements or post-test adjustments cannot usually be accommodated.