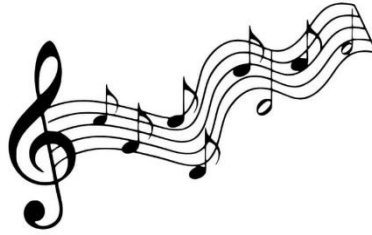


Syllabus for Music 26A



Voice Class Spring 2022, Music 26 A - V2766

Instructor's name: Annika Bäckström, Office Hour: By Appointment, Annika-Backstrom@redwoods.edu

Day/Time of meetings: Synchronous recorded zoom meetings every other Tuesday 10:00-11:11. The rest of the time is divided into individual lessons set up with the instructor.

Course units: 1

No Material is Needed

Catalog Description

Group instruction at the beginning level in the development of solo vocal techniques. Breathing techniques, tone quality, and stage presence are covered in a variety of musical styles.

Course Student Learning Outcomes *(from course outline of record)*

1. Using effective posture and breathing techniques, develop a vocal range of one and a half octaves.
2. Recognize, and realize in performance, expression directions.
3. Carry a vocal part individually in an a cappella round or with piano accompaniment.
4. Sing foreign language songs with correct diction.

Prerequisites/co-requisites/ recommended preparation

There are no prerequisites for this course.

Accessibility

Students will have access to online course materials that comply with the Americans with Disabilities Act of 1990 (ADA), Section 508 of the Rehabilitation Act of 1973, and College of the Redwoods policies. Students who discover access issues with this class should contact the instructor.

College of the Redwoods is also committed to making reasonable accommodations for qualified students with disabilities. If you have a disability or believe you might benefit from disability-related services and accommodations, please contact your instructor or [Disability Services and Programs for Students](#) (DSPS). Students may make requests for alternative media by contacting DSPS based on their campus location:

- Eureka: 707-476-4280, student services building, 1st floor
- Del Norte: 707-465-2324, main building near library
- Klamath-Trinity: 530-625-4821 Ext 103

During COVID19, approved accommodations for distance education classes will be emailed to the instructor by DSPS. In the case of face to face instruction, please present your written accommodation request to your instructor at least one week before the first test so that necessary arrangements can be made. Last-minute arrangements or post-test adjustments cannot usually be accommodated.

Support for online learners during COVID-19

In response to COVID-19, College of the Redwoods moved the majority of its courses online to protect health and safety. As the faculty and students adjust to this change, clear communication about student needs will help everyone be successful. Please let me know about any specific challenges or technology limitations that might affect your participation in class. I want every student to thrive.

Evaluation & Grading Policy

The class will be divided into two grading criteria: one for those who are beginners with solo singing (Beginning) and the other for those who have had solo singing experience (Intermediate). Weekly discussions on a variety of vocal related subjects, e.g. vocal technique, diction, performance practice, musical expression, how to read a musical manuscript, etc.

ALL LEVELS:

Weekly online participation/comments

You will receive 10 participation points for weekly comments/participation on Canvas. 50%
150 total (comments for the whole semester, 15 weeks/times):
140-150 points (for 14-15 weeks/times) = A
120-139 points (for 13-14 weeks/times) = B
100-119 points (for 12-13 weeks/times) = C
80-90 points (for 11-12 weeks/times) = D

Written performance Review

One concert/vocal performance report due by Finals Week. This can be either from a live or downloaded performance by one or more singers (any style is acceptable in a concert, recital, opera, musical theatre or other performance setting). The review needs to be a minimum of 2 pages: 12 font, 1" margins. You will be graded on content and grammar. 15%

PERFORMANCE REQUIREMENT

Record your performances and post them on Canvas or send them to Annika-Backstrom@redwoods.edu

BEGINNING LEVEL (26A/B)

Two solos for 26A, one by mid-semester and the other before the end of the semester. Three solos for 26B, one or two by mid-semester and one or two by the end of the semester. You are very welcome to perform more, but it's not required. 20%

INTERMEDIATE LEVELS (27A/B)

4 memorized solos; 2 by mid-semester and 2 solos by the end of the semester. 20%

Final Performance

Sing one song from memory with accompaniment. Present the Alternative Media Project. Finals week 2022

Admissions deadlines & enrollment policies

- *Classes begin: 01/15/22*
- *Last day to add a class: 01/21/22*
- *Martin Luther King, Jr's Birthday (all campuses closed: 01/17/22*
- *Last day to drop without a W and receive a refund: 01/28/22*
- *Census date (or 20% into class duration): 01/31/22*
- *Last Day to file P/NP (only courses where this is an option)*

02/11/22

- *Lincoln's Birthday (all campuses closed): 02/18/22*
- *Presidents Day (all campuses closed): 02/21/22*
- *Last day to petition to graduate or apply for certificate:*

03/03/22

- *Spring Break (no classes): 03/14/22-03/19/22*
- *Last day for student-initiated W (no refund): 04/01/22*
- *Last day for faculty-initiated W (no refund): 04/01/22*
- *Final examinations: 05/07/22-05/13/22*
- *Semester ends: 05/13/22*
- *Grades available for transcript release: approximately 05/30/22*

ACADEMIC DISHONESTY

In cases involving academic dishonesty, determination of the grade and of the student's status in the course is left primarily to the discretion of the faculty member. In such cases, where the instructor determines that a student has demonstrated academic dishonesty, the student may receive a failing grade for the assignment and/or exam and may be reported to the Chief Student Services Officer or designee. The Student Code of Conduct ([AP 5500](#)) is available on the College of the Redwoods website. Additional information about the rights and responsibilities of students, Board policies, and administrative procedures is located in the [College Catalog](#) and on the [College of the Redwoods website](#).

Disruptive behavior

Student behavior or speech that disrupts the instructional setting will not be tolerated. Disruptive conduct may include, but is not limited to: unwarranted interruptions; failure to adhere to instructor's directions; vulgar or obscene language; slurs or other forms of intimidation; and physically or verbally abusive behavior. In such cases where the instructor determines that a student has disrupted the educational process, a disruptive student may be temporarily removed from class. In addition, the student may be reported to the Chief Student Services Officer or designee. The Student Code of Conduct ([AP 5500](#)) is available on the College of the Redwoods website. Additional information about the rights and responsibilities of students, Board policies, and administrative procedures is located in the [College Catalog](#) and on the [College of the Redwoods website](#).

Students 01/07/22 who have experienced extenuating circumstances can complete & submit the Excused Withdrawal Petition to request an Excused Withdrawal (EW) grade instead of the current Withdrawal (W) or non-passing (D, F & NP) grades. The EW Petition is available from the Admissions and Records Forms Webpage. Supporting documentation is required.

Setting Your Preferred Name in Canvas

Students have the ability to have an alternate first name and pronouns to appear in Canvas. Contact [Admissions & Records](#) to request a change to your preferred first name and pronoun. Your Preferred Name will only be listed in Canvas. It does not change your legal name in our records. See the [Student Information Update form](#).

Canvas Information

If using Canvas, include navigation instructions, tech support information, what Canvas is used for, and your expectation for how regularly students should check Canvas for your class.

Log into Canvas at <https://redwoods.instructure.com>

Password is your 8 digit birth date

For tech help, email its@redwoods.edu or call 707-476-4160

Canvas Help for students: <https://www.redwoods.edu/online/Help-Student>

Canvas online orientation workshop: <https://www.redwoods.edu/online/Home/Student-Resources/Canvas-Resources>

Community College Student Health and Wellness

Resources, tools, and trainings regarding health, mental health, wellness, basic needs and more designed for California community college students, faculty and staff are available on the California Community Colleges [Health & Wellness website](#).

[Wellness Central](#) is a free online health and wellness resource that is available 24/7 in your space at your pace.

Students seeking to request a counseling appointment for academic advising or general counseling can email counseling@redwoods.edu.

Emergency procedures / Everbridge

College of the Redwoods has implemented an emergency alert system called Everbridge. In the event of an emergency on campus you will receive an alert through your personal email and/or phones. Registration is not necessary in order to receive emergency alerts. Check to make sure your contact information is up-to-date by logging into WebAdvisor <https://webadvisor.redwoods.edu> and selecting 'Students' then 'Academic Profile' then 'Current Information Update.'

Please contact Public Safety at 707-476-4112 or security@redwoods.edu if you have any questions. For more information see the [Redwoods Public Safety Page](#).

In an emergency that requires an evacuation of the building anywhere in the District:

- Be aware of all marked exits from your area and building
- Once outside, move to the nearest evacuation point outside your building
- Keep streets and walkways clear for emergency vehicles and personnel

Do not leave campus, unless it has been deemed safe by the campus authorities.

Del Norte Campus Emergency Procedures

Please review the [Crescent City campus emergency map](#) for campus evacuation sites, including the closest site to this classroom (posted by the exit of each room). For more information see the [Redwoods Public Safety Page](#).

Eureka Campus Emergency Procedures

Please review the [campus emergency map](#) for evacuation sites, including the closest site to this classroom (posted by the exit of each room). For more information on Public Safety go to the [Redwoods Public Safety Page](#). It is the responsibility of College of the Redwoods to protect life and property from the effects of emergency situations within its own jurisdiction.

In the event of an emergency:

1. Evaluate the impact the emergency has on your activity/operation and take appropriate action.
2. Dial 911, to notify local agency support such as law enforcement or fire services.
3. Notify Public Safety 707-476-4111 and inform them of the situation, with as much relevant information as possible.
4. Public Safety shall relay threat information, warnings, and alerts through the Everbridge emergency alert system, Public address system, and when possible, updates on the college website, to ensure the school community is notified.
5. Follow established procedures for the specific emergency as outlined in the College of the Redwoods Emergency Procedure Booklet, (evacuation to a safe zone, shelter in place, lockdown, assist others if possible, cooperate with First Responders, etc.).
6. If safe to do so, notify key administrators, departments, and personnel.
7. Do not leave campus, unless it is necessary to preserve life and/or has been deemed safe by the person in command.

Klamath Trinity Campus Emergency Procedures

Please review the responsibilities of, and procedures used by, the College of the Redwoods, Klamath-Trinity Instructional Site (KTIS) to communicate to faculty, staff, students and the general public during an emergency. It is the responsibility of College of the Redwoods, Klamath-Trinity Instructional Site (KTIS) to protect life and property from the effects of emergency situations within its own jurisdiction.

1. In the event of an emergency, communication shall be the responsibility of the district employees on scene.
 - a. Dial 911, to notify local agency support such as law enforcement or fire services.
 - b. If safe to do so, notify key administrators, departments, and personnel.
 - c. If safe to do so, personnel shall relay threat information, warnings, to ensure the school community is notified.
 - d. Contact Jolene Gates 530-625-4821 to notify of situation.
 - e. Contact Hoopa Tribal Education Administration office 530-625-4413
 - f. Notify Public Safety 707-476-4111.
2. In the event of an emergency, the responsible district employee on scene will:
 - a. Follow established procedures for the specific emergency as outlined in the College of the Redwoods Emergency Procedure Booklet.
 - b. Lock all doors and turn off lights if in lockdown due to an active shooter or similar emergency.
 - c. Close all window curtains.
 - d. Get all inside to safe location Kitchen area is best internal location.
 - e. If a police officer or higher official arrives, they will assume command.
 - f. Wait until notice of all is clear before unlocking doors.
 - g. If safe to do so, move to the nearest evacuation point outside building (Pooky's Park), directly behind the Hoopa Tribal Education Building.
 - h. Do not leave site, unless it has been deemed safe by the person in command. Student Support Services (required for online classes)

Student Support Services

The following online resources are available to support your success as a student:

- [CR-Online](#) (Comprehensive information for online students)
- [Library Articles & Databases](#)
- [Canvas help and tutorials](#)
- [Online Student Handbook](#)

[Counseling](#) offers assistance to students in need of professional counseling services such as crisis counseling.

Learning Resource Center includes the following resources for students

- [Academic Support Center](#) for instructional support, tutoring, learning resources, and proctored exams. Includes the Math Lab & Drop-in Writing Center
- [Library Services](#) to promote information literacy and provide organized information resources.
- [Multicultural & Diversity Center](#)

Special programs are also available for eligible students include

- [Extended Opportunity Programs & Services \(EOPS\)](#) provides financial assistance, support and encouragement for eligible income disadvantaged students at all CR locations.
- The TRiO Student Success Program provides eligible students with a variety of services including trips to 4-year universities, career assessments, and peer mentoring. Students can apply for the program in [Eureka](#) or in [Del Norte](#)
- The [Veteran's Resource Center](#) supports and facilitates academic success for Active Duty Military, Veterans and Dependents attending CR through relational advising, mentorship, transitional assistance, and coordination of military and Veteran-specific resources.
- Klamath-Trinity students can contact the CR KT Office for specific information about student support services at 530-625-4821

